



Library and Documentation

The Library of the Institute is a Regional Library under National Agricultural Research System of the country. It plays a vital role in meeting the information needs of the In-house users as well as users from the NARS. It remains open from 9.30 a.m. to 4.30 p.m. on all working days. It provides library, documentation and information services to the Scientists, Staff, Students and Researchers of the Institute as well as users from ICAR Institutes and State Agricultural Universities.

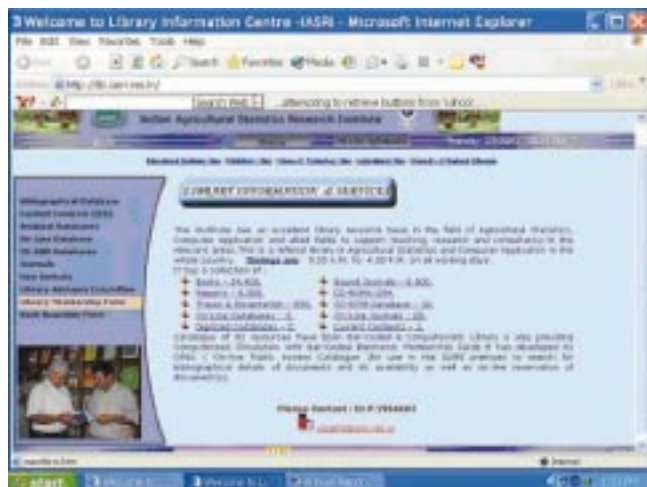
The Library Advisory Committee plays an important role in the Management of the Library and clears proposals relating to enrichment of resources of the Library such as books, journals, CD-ROMs as well as Infrastructural Development etc. The Library Advisory Committee for the year 2004-05 has been as under:

1. Dr. S.D. Sharma Chairman
2. Dr. V.K. Gupta Member
3. Dr. P.K. Malhotra Member
4. Dr. H.V.L. Bathla Member
5. Dr. Ranjana Agarwal Member

6. Dr. V.K. Sharma Member
7. Dr. V.T. Prabhakaran Member
8. Dr. S.S. Kutaula Member
9. Dr. V.K. Bhatia Member
10. Dr. Jagbir Singh BOS Member
11. Sh. A.K. Chaturvedi Member (Till August 2004)
12. Sh. Chironji Lal Member
13. Sh. H.K. Samaddar Member (Till May 2004)
14. Sh. K.K. Hamza Member (Since June 2004)
15. Dr. S.S. Srivastava Member Secretary
(Till October 2004)
16. Dr. P. Visakhi Member Secretary
(Since November 2004)

The internal administration and organisation of the library and documentation is supervised by Dr. S.S. Srivastava (Head Library) till 31 October 2004 and by Dr. P. Visakhi since 01 November 2004.

During the year the Library provided following services to its users:



Home page of library information centre

Reprographic Service (Manual)

Computerized Services

1. Bibliographical Database
2. On-line Database (Through Internet)
3. Off-line Searches (CD-ROM Database)
4. Current Content Service (JCC)
5. Internet Search
6. On-line Enquiry (OPAC)
7. On-line Journals (Through Internet)
8. Current Awareness Service (New Arrivals)
9. On-line Reservation of Document.

The following Computer Activities were done in the Library:

1. All resources have been bar-coded and house keeping operations like cataloguing, circulation have been computerized.
2. Conventional catalogue of books, journals, some of grey literature, Ph.D. thesis and M.Sc. dissertation have been computerized and kept on on-line for members to access.
3. Bonafide members have been issued electronic, bilingual and bar-coded Membership Card with Photo.
4. Available 28 On-line Journals (e-Journals)
5. Subscribing 3 On-line portals i.e.
 - MathScinet (<http://www.ams.org/mathscinet>)

- Ingenta (<http://www.gateway.ingenta.com>)
 - Indiastat (<http://indiastat.com>)
6. Available the following CD-ROM Databases
 - Current Index Statistics (1955-2003)
 - AGRIS (1991 onwards)
 - Maths Science Disk (1940 Onwards)
 - AGRICOLA (1970 Onwards)
 - NUCSCI (1991 - 2001)
 - Energy Statistics of OECD Countries (1960-2000)
 - World Guide to Libraries Plus- 2003
 - UNCTAD Handbook of Statistics-2001
 - Ulrich's International Periodicals Directory
 - National Accounts Statistics (EPW) (1950–2001)
 - Domestic Product of States of India (EPWC) (1960-2001)
 - Rural Household Expenditure
 - Statistical Theory and Methods Abstracts (2002 Onwards)
 7. Current Contents of Journals subscribed in Library are available for 2004 On-line.
 8. Launched elaborated and well featured website of the Library (<http://lib.iasri.res.in>) with link to all resources and services available in the Library so that user can access these services from his/her work place.

Brief statistics relating to the library is as under:

S.No.	Item	Number
1.	Books added (English)	151
2.	Books added (Hindi)	296
3.	Grey literature added	110
4.	Indian and Foreign Periodicals subscribed	115
5.	Publication issued from the library	10325
6.	Publication borrowed or lent out on Inter-Library-Loan	38
7.	Readers visited and consulted the library	13528
8.	Scientific and Technical Papers Reprographied (Pages)	23375
9.	CD-ROM Data Bases Acquired	13
10.	Newsletters and Journals received on complementary basis	52
11.	Internet/Databases Access, Searches	1512