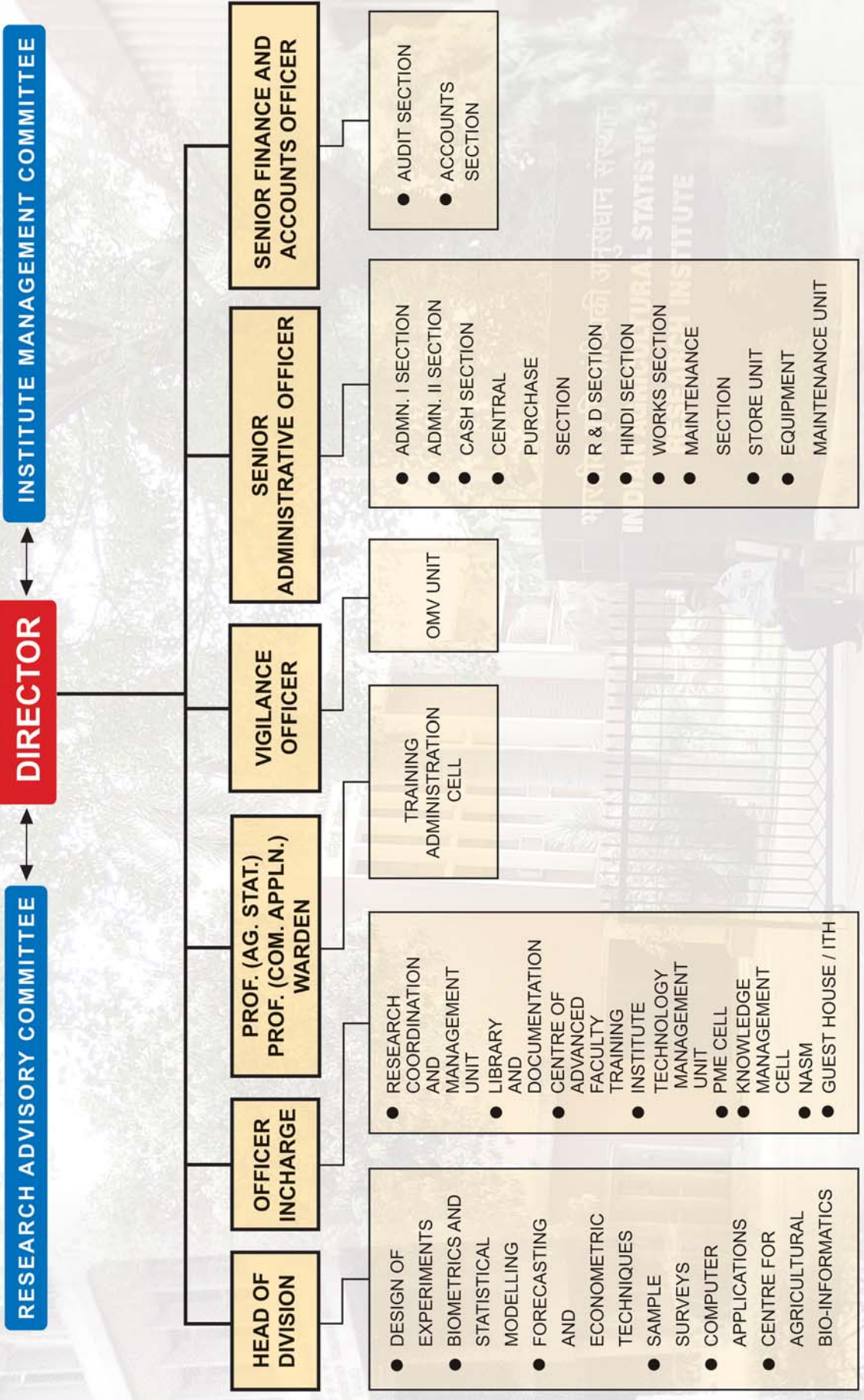


# ORGANOGRAM



RESEARCH ADVISORY COMMITTEE

DIRECTOR

INSTITUTE MANAGEMENT COMMITTEE

HEAD OF DIVISION

OFFICER INCHARGE

PROF. (AG. STAT.)  
PROF. (COM. APPLN.)  
WARDEN

VIGILANCE OFFICER

SENIOR ADMINISTRATIVE OFFICER

SENIOR FINANCE AND ACCOUNTS OFFICER

- DESIGN OF EXPERIMENTS
- BIOMETRICS AND STATISTICAL MODELLING
- FORECASTING AND ECONOMETRIC TECHNIQUES
- SAMPLE SURVEYS
- COMPUTER APPLICATIONS
- CENTRE FOR AGRICULTURAL BIO-INFORMATICS

- RESEARCH COORDINATION AND MANAGEMENT UNIT
- LIBRARY AND DOCUMENTATION
- CENTRE OF ADVANCED FACULTY TRAINING INSTITUTE
- TECHNOLOGY MANAGEMENT UNIT
- PME CELL
- KNOWLEDGE MANAGEMENT CELL
- NASM
- GUEST HOUSE / ITH

- TRAINING ADMINISTRATION CELL
- OMV UNIT

- ADMN. I SECTION
- ADMN. II SECTION
- CASH SECTION
- CENTRAL PURCHASE SECTION
- R & D SECTION
- HINDI SECTION
- WORKS SECTION
- MAINTENANCE SECTION
- STORE UNIT
- EQUIPMENT MAINTENANCE UNIT

- AUDIT SECTION
- ACCOUNTS SECTION